

Reprinted from

JOURNAL
OF THE
PHYSICAL
SOCIETY
OF
JAPAN



■ FULL PAPER

**Corpuscular Model of Two-Beam Interference
and Double-Slit Experiments with Single Photons**

Fengping JIN, Shengjun YUAN, Hans DE RAEDT,
Kristel MICHIELSEN, and Seiji MIYASHITA

J. Phys. Soc. Jpn. **79** (2010) 074401

Corpuscular Model of Two-Beam Interference and Double-Slit Experiments with Single Photons

Fengping JIN^{1*}, Shengjun YUAN^{2†}, Hans DE RAEDT^{1‡},
 Kristel MICHELSEN^{3§}, and Seiji MIYASHITA^{4,5¶}

¹*Department of Applied Physics, Zernike Institute for Advanced Materials, University of Groningen,
 Nijenborgh 4, NL-9747AG Groningen, The Netherlands*

²*Institute of Molecules and Materials, Radboud University of Nijmegen, NL-6525ED Nijmegen, The Netherlands*

³*Institute for Advanced Simulation, Jülich Supercomputing Centre, Forschungszentrum Jülich, D-52425 Jülich, Germany*

⁴*Department of Physics, Graduate School of Science, The University of Tokyo, Bunkyo, Tokyo 113-8656, Japan*

⁵*CREST, JST, Kawaguchi, Saitama 332-0012, Japan*

(Received February 9, 2010; accepted April 22, 2010; published June 25, 2010)

We introduce an event-based corpuscular simulation model that reproduces the wave mechanical results of single-photon double-slit and two-beam interference experiments and (of a one-to-one copy of an experimental realization) of a single-photon interference experiment with a Fresnel biprism. The simulation comprises models that capture the essential features of the apparatuses used in the experiment, including the single-photon detectors recording individual detector clicks. We demonstrate that incorporating in the detector model, simple and minimalistic processes mimicking the memory and threshold behavior of single-photon detectors is sufficient to produce multipath interference patterns. These multipath interference patterns are built up by individual particles taking one single path to the detector where they arrive one-by-one. The particles in our model are not corpuscular in the standard, classical physics sense in that they are information carriers that exchange information with the apparatuses of the experimental set-up. The interference pattern is the final, collective outcome of the information exchanges of many particles with these apparatuses. The interference patterns are produced without making reference to the solution of a wave equation and without introducing signalling or non-local interactions between the particles or between different detection points on the detector screen.

KEYWORDS: computer simulation, interference, double-slit experiments, quantum theory
 DOI: [10.1143/JPSJ.79.074401](https://doi.org/10.1143/JPSJ.79.074401)

1. Introduction

In 1802, Young performed a double-slit experiment with light in order to resolve the question whether light was composed of particles, confirming Newton's particle picture of light, or rather consisted of waves.¹⁾ His experiment showed that the light emerging from the slits produces a fringe pattern on the screen that is characteristic for interference, discrediting Newton's corpuscular theory of light.¹⁾ Hence, from the point of view of classical physics, the particle and wave character of light did not seem to be compatible. Moreover, the interpretation in terms of particles or waves of the observations in experiments with light became even more complicated after conduction of the Michelson–Morley experiment²⁾ which provided evidence that light waves do not need a medium (the ether) to propagate through, in contrast to water and sound waves which require media. However, explanation of the photoelectric effect by Einstein in terms of photons³⁾ is perhaps the most direct and convincing evidence of the corpuscular nature of light. Einstein's explanation of the photoelectric effect was the start of understanding the quantum nature of light and influenced the development of the concept of wave-particle duality in quantum theory.

In 1924, de Broglie introduced the idea that also matter, not just light, can exhibit wave-like properties.⁴⁾ This idea

has been confirmed in various double-slit experiments with massive objects such as electrons,^{5–8)} neutrons,^{9,10)} atoms^{11,12)} and molecules such as C_{60} and C_{70} ,^{13,14)} all showing interference. In some of the double-slit experiments^{6,7,15)} the interference pattern is built up by recording individual clicks of the detectors. Identifying the registration of a detector click, the “event”, with the arrival of a particle and assuming that the time between successive clicks is sufficiently long such that these particles do not interact, it becomes a challenge to explain how the detection of individual objects that do not interact with each other can give rise to the interference patterns that are being observed. According to Feynman, the observation that the interference patterns are built up event-by-event is “impossible, absolutely impossible to explain in any classical way and has in it the heart of quantum mechanics”.¹⁶⁾

Although wave-particle duality is a central concept of quantum theory, in practice quantum theory only works with wave functions to describe the total system under study. In order to describe the single occurrences observed in various experiments the process of wave function collapse has been introduced. However, the precise mechanism of a wave function collapse is not known.

Recently, various experiments have been performed that measure individual events generated by microscopic objects. Hence, it is of interest to study how the particle and wave picture of these experiments are contradicting each other. It is often said that wave properties like interference cannot be realized by non-interacting particles which satisfy Einstein's criterion of local causality. In earlier work we have presented an event-based corpuscular simulation model

*E-mail: f.jin@rug.nl

†E-mail: s.yuan@science.ru.nl

‡E-mail: h.a.de.raedt@rug.nl

§E-mail: k.michelsen@fz-juelich.de

¶E-mail: miya@spin.phys.s.u-tokyo.ac.jp

which demonstrates that such particles can indeed produce interference patterns and applied it to a variety of single-photon experiments like beam splitter and Mach–Zehnder interferometer experiments, Wheeler’s delayed choice experiments and many others.^{17–28} What these experiments have in common is that the interference can be described as two-path interference, that is the observed interference pattern is the result of having only two possible paths for the particles travelling between source and detector. In order to simulate such experiments it is sufficient to use adaptive models for the optical apparatuses and to use detectors that simply count the number of detection events.^{17–28} In this paper we extend the simulation model towards simulating multipath interference patterns as observed in single-photon two-beam interference and two-slit experiments, for example. Detectors that are simply counting the detection events cannot be used for this purpose. Therefore we introduce a new simulation model for the single-photon detector that takes into account the memory and threshold behavior of such a detector. The model is a natural extension of the earlier work mentioned and is fully compatible, that is interchanging in our earlier work the simple counting detector model with this more complex detector does not change the conclusions. In this sense, the present detector model adds a new, fully compatible, component to the collection of event-by-event simulation algorithms.

Note that the event-based simulation model is not a corpuscular model in the classical-physics sense. In our model, particles are objects that carry information. As a particle encounters a material device, it exchanges information with this device. In our model, this information exchange is the cause of the appearance of an interference pattern. In other words, in our approach we construct a mechanism which produces wave-like phenomena by local variables only. To this end, we introduce independent objects which carry information. These objects we call “particles”. Each particle interacts with the material of the device only and the effect of many of such interactions is to build up a situation which causes the appearance of a first-order interference pattern.

To head off possible misunderstandings, the present paper is not concerned with an interpretation or an extension of quantum theory nor does it affect the validity and applicability of quantum theory. Furthermore, the event-based detector models that we introduce in this paper should not be regarded as realistic models for say, a photomultiplier or a photographic plate and the chemical process that renders the image. Our aim is to show that, in the spirit of Occam’s razor, these very simple event-based models can produce interference patterns without making reference to the solution of a wave equation.

Although waves can be the physical cause of interference, the key point of our work is that it is wrong to think that waves are the *only* possible physical cause of interference: In our approach, the clicks produced by non-interacting/non-communicating detectors, caused by non-interacting/non-communicating particles that arrive at single detectors one-by-one, build up a pattern that is identical to the one that is obtained by solving a wave equation. However, our event-based simulation approach does not require knowledge of the wave amplitudes obtained by first solving the

wave mechanical problem or requires the solution of the Schrödinger equation. Interference patterns appear as a result of an event-by-event simulation of classical, locally causal, adaptive dynamical systems.

The paper is structured as follows. In §2, we introduce the interference experiments that we simulate. In §3, we review the main features of the photon detection process. Section 4 specifies the new detector models and the simulation algorithm in full detail. A Mathematica implementation of this algorithm for the case of the double-slit experiment can be downloaded from the Wolfram Demonstration Project web site.²⁹ In §5, we compare the event-by-event simulation results with the numerical results obtained from wave theory for the two-beam interference experiments discussed in §2, showing that our event-based, particle-like approach reproduces the results of quantum theory without making use of concepts thereof. In §6, we propose a realizable experiment to test our event-based models for interference. Our conclusions are given in §7.

2. Two-Beam Interference

In this paper, we focus on interference experiments with single-photons, leaving the case of massive particles for further research. As a prototype problem, we consider two-beam interference experiments with a Fresnel biprism.³⁰ A schematic diagram of such an experiment is shown in Fig. 1. A pencil of light, emitted by the source S , is divided by refraction into two pencils.³⁰ Interference can be obtained in the region where both pencils overlap, denoted by the grey area in Fig. 1. As a Fresnel biprism consists of two equal prisms with small refraction angle and as the angular aperture of the pencils is small, we may neglect aberrations.³⁰ The system consisting of the source S and the Fresnel biprism can then be replaced by a system with two virtual sources S_1 and S_2 ³⁰ (see Fig. 1). Alternatively, following Young³⁰ we can let the light impinge on a screen with two apertures and regard these apertures as the two virtual sources S_1 and S_2 (see Figs. 2 and 3). Results of a single-photon interference experiment with a Fresnel biprism and a time-resolved interference experiment for the system schematically depicted in Fig. 3 are reported in refs. 15 and 31, respectively.

For all these simplified systems, a straightforward application of Maxwell’s theory yields the intensity at the detection screen. We consider a few representative cases for which closed-form expressions can be obtained:

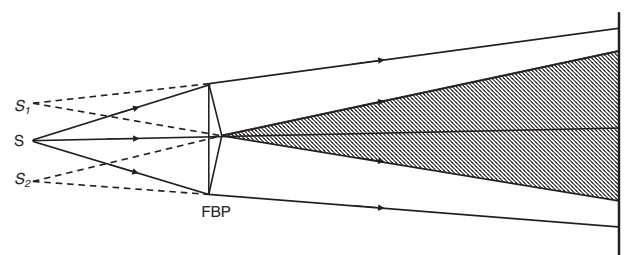


Fig. 1. Schematic diagram of an interference experiment with a Fresnel biprism (FBP).³⁰ S , S_1 , S_2 denote the point source and its two virtual images, respectively. The grey area is the region in which an interference pattern can be observed.

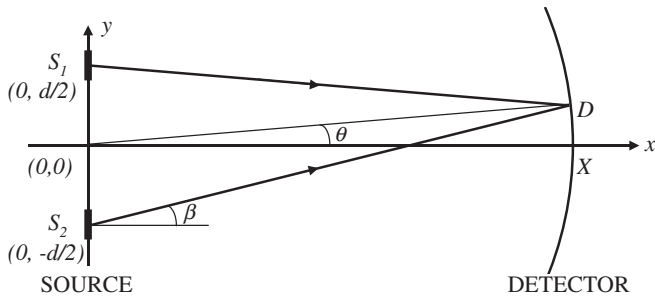


Fig. 2. Schematic diagram of a simplified double-slit experiment with two sources S_1 and S_2 of width a , separated by a center-to-center distance d , emitting light according to a uniform current distribution [see eq. (1)] and with a uniform angular distribution, β denoting the angle. The light is recorded by detectors D positioned on a semi-circle with radius X . The angular position of a detector is denoted by θ .

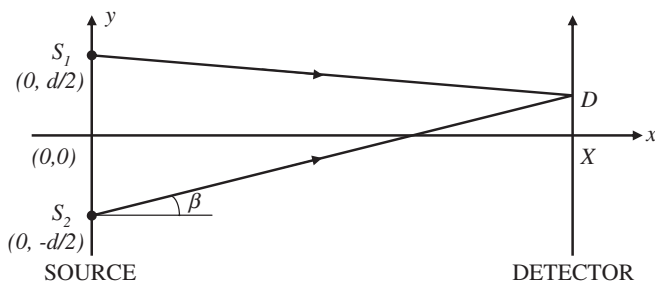


Fig. 3. Schematic diagram of a two-beam interference experiment with two line sources S_1 and S_2 having a spatial Gaussian profile [see eq. (3)], emitting light according to a uniform angular distribution, β denoting the angle. The sources are separated by a center-to-center distance d . The light is detected by detectors D positioned at (X, y) .

- The sources S_1 and S_2 are lines of length a , separated by a center-to-center distance d (see Fig. 2). These sources emit light according to a uniform current distribution, that is

$$J(x, y) = \delta(x) [\Theta(a/2 - |y - d/2|) + \Theta(a/2 - |y + d/2|)], \quad (1)$$

where $\Theta(\cdot)$ denotes the unit step function. In the Fraunhofer regime, the light intensity at the detector on a circular screen is given by³⁰

$$I(\theta) = A \left(\frac{\sin \frac{qa \sin \theta}{2}}{\frac{qa \sin \theta}{2}} \right)^2 \cos^2 \frac{qd \sin \theta}{2}, \quad (2)$$

where A is a constant, q is the wave number, and θ denotes the angular position of the detector D on the circular screen (see Fig. 2).

- The sources S_1 and S_2 form a line source with a current distribution given by

$$J(x, y) = \delta(x) \sum_{s=\pm 1} e^{-(y-sd/2)^2/2\sigma^2}, \quad (3)$$

where σ is the variance and d denotes the distance between the centers of the two sources (see Fig. 3). The intensity of the overlapping pencils at the detector reads

$$I(y) = B \left(\cosh \frac{byd}{\sigma^2} + \cos \frac{(1-b)qyd}{X} \right) \times e^{-b(y^2+d^2/4)/\sigma^2}, \quad (4)$$

where B is a constant, $b = q^2\sigma^4/(X^2 + q^2\sigma^4)$, and (X, y) are the coordinates of the detector D (see Fig. 3). Closed-form expression eq. (4) was obtained by assuming that $d \ll X$ and $\sigma \ll X$.

- The two sources S_1 and S_2 are circles with a radius a and their centers are separated by a distance d . The current distribution is given by

$$J(x, y, z) = \delta(x) [\Theta(a^2/4 - (y - d/2)^2 - z^2) + \Theta(a^2/4 - (y + d/2)^2 - z^2)]. \quad (5)$$

In the Fraunhofer regime, the light intensity at a detector placed on a sphere is given by³⁰

$$I(\theta) = C \left[\frac{2J_1(qa \sin \theta)}{qa \sin \theta} \right]^2 \cos^2 \frac{qd \sin \theta}{2}, \quad (6)$$

where C is a constant, θ denotes the zenith of the detector D on the spherical detection screen and $J_1(\cdot)$ is the Bessel function of the first kind of order one.

From eqs. (2), (4), and (6), it directly follows that the intensity distribution on the detection screen, displays fringes that are characteristic for interference.

3. Event-by-Event Simulation and Detector Model

Imagine that individual particles build up the interference pattern one by one and exclude the possibility that there is direct communication between the particles (even if one particle has arrived at the detector while another particle is at the source or at a detector). If we then simply look at Fig. 2 or 3, we arrive at the logically unescapable conclusion that the interference pattern can only be due to the internal operation of the detector: There is nothing else that can cause the interference pattern to appear.

Obviously a simple, passive detector model that only counts the number of particles fails to reproduce the interference patterns of two-beam interference experiments in which there are sources and detectors only, as in Figs. 2 and 3. Before we introduce new event-based models for the detector, it is expedient to review the conventional theory of the photon detection process.

In its simplest form, a light detector consists of a material that can be ionized by light. The electric charges that result from the ionization process are then amplified, chemically in the case of a photographic plate or electronically in the case of photo diodes or photomultipliers. In the wave-mechanical picture, the interaction between the incident electric field \mathbf{E} and the material takes the form $\mathbf{P} \cdot \mathbf{E}$, where \mathbf{P} is the polarization vector of the material.³⁰ Treating this interaction in first-order perturbation theory, the detection probability reads $P_{\text{detection}}(t) = \int_0^t \int_0^{t'} \langle \langle \mathbf{E}^T(t') \cdot \mathbf{K}(t' - t'') \cdot \mathbf{E}(t'') \rangle \rangle dt' dt''$ where $\mathbf{K}(t' - t'')$ is a memory kernel that is characteristic for the material only and $\langle \langle \cdot \rangle \rangle$ denotes the average with respect to the initial state of the electric field.³² Both the constitutive equation³⁰ $\mathbf{P}(\omega) = \chi(\omega)\mathbf{E}(\omega)$ as well as the expression for $P_{\text{detection}}(t)$ show that the detection process involves some kind of memory. Furthermore, very sensitive photon detectors such as photomultipliers and avalanche diodes are trigger devices, meaning that the

recorded signal depends on an intrinsic threshold. Conceptually, the chemical process that renders the image encoded in the photographic material plays a similar role.

From these general considerations, it is clear that a minimal model for the detector should be able to account for the memory and the threshold behavior of the detectors. An event-based model for the detector cannot be “derived” from quantum theory, simply because quantum theory has nothing to say about individual events.³³⁾ Therefore, from the perspective of quantum theory, any model for the detector that operates on the level of single events must necessarily appear as *ad hoc*. In contrast, from the viewpoint of a contextual description, the introduction of such a model is a necessity.³³⁾

4. Simulation Model

In our simulation model, every essential component of the laboratory experiment such as the source, the Fresnel biprism, and detector array has a counterpart in the algorithm. The data is analyzed by counting detection events, just as in the laboratory experiment.¹⁵⁾ The simulation model is solely based on experimental facts.

The simulation can be viewed as a message-processing and message-passing process routing messengers through a network of units that processes messages. The processing units play the role of the components of the laboratory experiment and the network represents the complete experimental set-up. We now specify the operation of the basic components of the simulation model in full detail. Other components that are specific to a particular interference experiment are described together with the presentation of the simulation results.

4.1 Messenger

In our simulation approach, we view each photon as a messenger carrying a message. Each messenger has its own internal clock, the hand of which rotates with frequency f . As the messenger travels from one position in space to another, the clock encodes the time-of-flight t modulo the period $1/f$. The message, the position of the clock’s hand, is most conveniently represented by a two-dimensional unit vector $\mathbf{e}_k = (e_{0,k}, e_{1,k}) = (\cos \phi_k, \sin \phi_k)$, where the subscript $k > 0$ labels the successive messages, $\phi_k = 2\pi f t_k$, and t_k is the time-of-flight of the k -th messenger. The messenger travels with a speed c/n where c denotes the speed of light in vacuum and n is the refractive index of the medium in which the messenger moves.

4.2 Source

In a simulation model in which the photons are viewed as messengers, the single-photon source is trivially realized by creating a messenger and waiting until its message has been processed by the detector before creating the next messenger. This ensures that there can be no direct information exchange between the messengers, even if one particle has arrived at the detector while another particle is at the source or at a detector, implying that our simulation model (trivially) satisfies Einstein’s criterion of local causality.

For the double-slit, two-beam interference, and circular slits simulations, messengers leave the source at positions generated randomly according to the current distributions

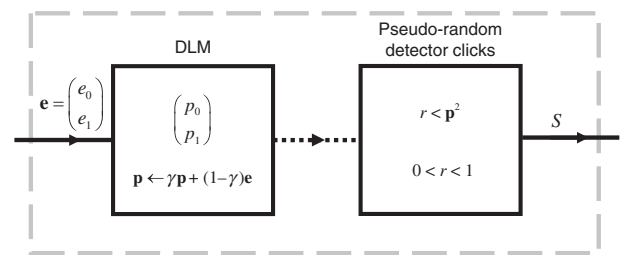


Fig. 4. Diagram of the event-based detector model defined by eqs. (7) and (8). The dashed line indicates the data flow within the processing unit.

eqs. (1), (3), and (5), respectively. The distribution of the angle β is chosen to be uniform. When messenger k is created, its internal clock time t_k is set to zero.

4.3 Detector

A single photon detector, such as a photographic plate, consists of many identical detection units each having a predefined spatial window in which they can detect photons. Because these small detection units are photon detectors themselves we also name them detectors in what follows. Here we construct a processing unit that acts as a detector for individual messages. A schematic diagram of the unit is shown in Fig. 4. The first stage consists of a deterministic learning machine (DLM) that receives on its input channel the k th message represented by the two-dimensional vector $\mathbf{e}_k = (\cos \phi_k, \sin \phi_k)$. In its simplest form the DLM contains a single two-dimensional internal vector with Euclidean norm less or equal than one. We write $\mathbf{p}_k = (p_{0,k}, p_{1,k})$ to denote the value of this vector after the k th message has been received. Upon receipt of the k th message the internal vector is updated according to the rule

$$\mathbf{p}_k = \gamma \mathbf{p}_{k-1} + (1 - \gamma) \mathbf{e}_k, \quad (7)$$

where $0 < \gamma < 1$ and $k > 0$. Update rule eq. (7) clearly indicates that the first stage learns from the incoming messages in a deterministic way and therefore it is given the name deterministic learning machine. Obviously, if $\gamma \neq 0$, a machine that operates according to the update rule eq. (7) has memory.

The second stage of the detector (see Fig. 4) uses the information stored in the internal vector to decide whether or not to generate a click (threshold behavior). As a highly simplified model for the bistable character of the real photo-detector or photographic plate, we let the machine generate a binary output signal S_k using the intrinsic threshold function

$$S_k = \Theta(\mathbf{p}_k^2 - r_k), \quad (8)$$

where $\Theta(\cdot)$ is the unit step function and $0 \leq r_k < 1$ is a uniform pseudo-random number. Note that in contrast to experiment, in a simulation, we could register both the $S_k = 0$ and $S_k = 1$ events such that the number of input messages equals the sum of the $S_k = 0$ and $S_k = 1$ detection events. Since in experiment it cannot be known whether a photon has gone undetected, we discard the information about the $S_k = 0$ detection events in our future analysis.

The total detector count is defined as

$$N = \sum_{j=1}^k S_j, \quad (9)$$

where k is the number of messages received. Thus, N counts the number of one's generated by the machine. As noted before a detector screen is just a collection of identical detectors and is modeled as such. Each detector has a predefined spatial window within which it accepts messages.

In Appendix A we prove that as $\gamma \rightarrow 1^-$, the internal vector \mathbf{p}_k converges to the average of the messages $\mathbf{e}_1, \dots, \mathbf{e}_k$. In general, the parameter γ controls the precision with which the machine defined by eq. (7) learns the average of the sequence of messages $\mathbf{e}_1, \mathbf{e}_2, \dots$ and also controls the pace at which new messages affect the internal state of the DLM (memory effect).¹⁷ In Appendix B we show how to modify the update rule eq. (7) such that the transient regime of the detector becomes shorter. The transient behavior of the simplest and the slightly more complicated detector models may be accessible to real experiments, as explained in §6. In Appendix B, we also give an alternative for eq. (8) that does not make use of pseudo-random numbers.

Before we proceed we make a few notes on the memory and threshold behavior of our detector simulation models. Although the word memory may give the impression that the detector keeps track of all the photons that pass, all the event-based detector models introduced in this paper have barely enough memory to store the equivalent of one message. Thus, these models derive their power, not from storing a lot of data, but from the way they process successive messages. Most importantly, the DLMs do not need to keep track of the number k of messages that they receive, a number that we cannot assume to be known because in real experiments we can only count the clicks of the detector, not the photons that were not detected. As shown in Appendix C, the role of the local memory of the detector is similar to that of the dielectric function in Maxwell's theory. Our detector models do not incorporate a memory fade-out as a function of time. Although this could be an essential feature in time frames in which the detectors do not receive photons, we do not consider it to be of importance for our present study.

We also want to emphasize that the presence of a threshold does not cause our detector model to operate with less than 100% efficiency. In general, the detection efficiency is defined as the overall probability of registering a count if a photon arrives at the detector.³⁴ Using this definition, our event-based detector model simulates an ideal single-photon detector that has 100% detection efficiency. This can easily be demonstrated by performing the simulation of an experiment (which is very different from a double-slit experiment) that measures the detection efficiency.³⁴ In such an experiment a point source emitting single photons (messengers) is placed far away from a single detector. As all photons that reach the detector have the same time-of-flight (to very good approximation), all the messengers that arrive at this detector will carry the same message. As a result, the internal vector rapidly converges to one, so that the detector clicks every time a photon arrives. Thus, the detection efficiency, as defined for real detectors, of our detector model is very close to 100%. Although the detection efficiency of the detector model itself is very close to 100%, the ratio of detected to emitted photons is much less than one. Note however that, in general, as is well known, a photon detector + electronics is an open system

(powered by external electrical sources etc.), hence photon-energy conservation within the detector-photon system is not an issue.

4.4 Discussion

In our approach, interference appears as a result of processing individual events, but definitely not because we have introduced “wave-like” ingredients in a sneaky manner. In our corpuscular model, each particle carries its own clock, that is, it carries its own local oscillator. This oscillator only serves to mimic the frequency of the individual particle (photon). The particle hits the detector, the detector “observes” the state of the oscillator that is attached to this particular particle and determines its time-of-flight. Note that the idea of introducing the time-of-flight does not mean that we obtain interference by summing wave functions $a_k e^{-i\omega t_k}$ where t_k denotes the time-of-flight of the k th particle.

There is no communication/interaction between the detectors that make up the detection screen, hence there is no wave equation (i.e. no partial differential equation) that enforces a relation between the internal variables of these detectors. Likewise, the oscillator that is carried by a particle never interacts with an oscillator of another particle, hence the motion of these two oscillators is also not governed by a wave equation. Naively, one might imagine the oscillators tracing out a wavy pattern in space as they travel from the source to the detector screen. However, in our model there is no relation between the times at which the particles leave the source, hence it is impossible to characterize all these traces by a field that depends on one set of space-time coordinates, as required for a wave theory.

5. Simulation Results

First, we demonstrate that our event-by-event simulation model reproduces the wave mechanical results eq. (2) of the double-slit experiment. Second, we simulate a two-beam interference experiment and show that the simulation data agree with eq. (4). Third, we validate the simulation approach by reproducing the interference patterns for two circular sources [see eq. (6)]. Finally, we present the results for the simulation of the single-photon interference experiment with a Fresnel biprism¹⁵ (see Fig. 1). The results presented in this section have all been obtained using the detector model described in §4. Simulation data produced by the detector models described in Appendix B are given in §6.

5.1 Double-slit experiment

As a first example, we consider the two-slit experiment with sources that are slits of width $a = \lambda$ ($\lambda = 670$ nm in all our simulations), separated by a center-to-center distance $d = 5\lambda$ (see Fig. 2). In Fig. 5(a), we present the simulation results for a source-detector distance $X = 0.05$ mm. When a messenger (photon) travels from the source at $(0, y)$ to the circular detector screen with radius X , it updates its own time-of-flight, or equivalently its angle ϕ . This time-of-flight is calculated according to geometrical optics.³⁰ More specifically, a messenger leaving the source at $(0, y)$ under an angle β (see Fig. 2) will hit the detector screen at a position determined by the angle θ given by

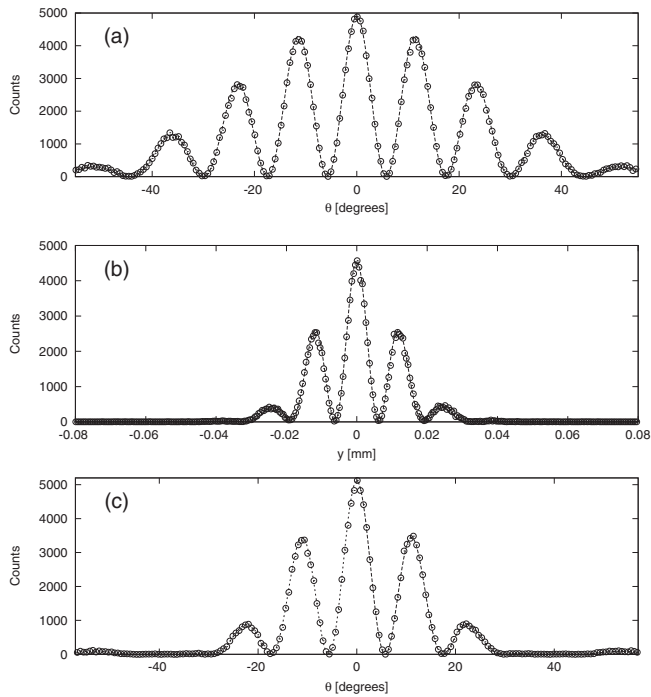


Fig. 5. Detector counts as a function of the angular (spatial) detector position θ (y) as obtained from event-by-event simulations of the interference experiment shown in Fig. 2 (Fig. 3). The circles denote the event-based simulation results produced by the detector model defined in §4. The dashed lines are the results of wave theory [see eqs. (2), (4), and (6)]. (a) The sources are slits of width $a = \lambda$ ($\lambda = 670$ nm in all our simulations), separated by a distance $d = 5\lambda$ and the source-detector distance $X = 0.05$ mm (see Fig. 2). The sources emit particles according to the current distribution eq. (1). An interactive program for the double-slit simulation can be downloaded from the Wolfram Demonstration Project web site;²⁹⁾ (b) The sources S_1 and S_2 , separated by a distance $d = 8\lambda$, emit particles according to a Gaussian current distribution eq. (3) with variance $\sigma = \lambda$ and mean $d/2$ and $-d/2$, respectively (see Fig. 3). The source-detector distance $X = 0.1$ mm; (c) The two circular sources S_1 and S_2 of radius $a = \lambda$ with centers separated by a distance $d = 5\lambda$ emit particles according to the current distribution eq. (5). The distance between the center of the two-source system and the spherical detection screen is $X = 0.1$ mm.

$$\sin \theta = z \cos^2 \beta + \sin \beta \sqrt{1 - z^2 \cos^2 \beta}, \quad (10)$$

where $z = y/X$ and $|z| < 1$. The distance traveled is then given by

$$s = X \sqrt{1 - 2z \sin \beta + z^2}, \quad (11)$$

and hence the message is determined by the angle $\phi = 2\pi fs/c$ where c is the speed of light. As the messenger hits a detector, the detector updates its internal vector and decides whether to output a zero or a one.

This process is repeated many times. The initial y -coordinate of the messenger is chosen randomly from a uniform distribution on the interval $[-d/2 - a/2, -d/2 + a/2] \cup [+d/2 - a/2, +d/2 + a/2]$. The angle β is a uniform pseudo-random number between $-\pi/2$ and $\pi/2$.

The markers in Fig. 5(a) show the event-by-event simulation results produced by the detector model described in §4 with $\gamma = 0.999$. We used a set of thousand detectors positioned equidistantly in the interval $[-57^\circ, 57^\circ]$, each of them receiving on average by 6000 photons. The number of clicks generated by the detectors, that is the number of so-called detected photons, is approximately 16×10^5 . Hence,

the ratio of detected to emitted photons is of the order 0.25, a fairly large number compared to those achieved in laboratory experiments with single-photons (see §5.4). The result of wave theory, as given by the closed-form expression eq. (2), is represented by the dashed line. Without using any knowledge about the solution of a wave equation, the event-based simulation (markers) reproduces the results of wave theory.

According to our mathematical analysis of the performance of the machines (see Appendix A), accurate results (relative to the predictions of quantum theory) are to be expected for γ close to one only. Taking for instance $\gamma = 0.99$ does not change the qualitative features although it changes the number of counts by small amounts (data not shown).

An interactive Mathematica program of the event-based double-slit simulation which allows the user to change the model parameters and to verify that the simulation reproduces the results of wave theory may be downloaded from the Wolfram Demonstration Project web site.²⁹⁾

5.2 Two-beam interference experiment

As a second example we consider the two-beam interference experiment depicted in Fig. 3. We assume that the messengers leave either source S_1 or S_2 from a position y that is distributed according to a Gaussian distribution with variance σ and mean $+d/2$ or $-d/2$, respectively. Also in this case, the time-of-flight is calculated according to geometrical optics.³⁰⁾ A messenger leaving the source at $(0, y)$ under an angle β (see Fig. 3) will hit the detector screen at a position (X, y')

$$y' = X \tan \beta + y, \quad (12)$$

the distance traveled is given by $s = X \sec \beta$ and the message is determined by the angle $\phi = 2\pi fs/c$ where c is the speed of light.

The simulation results for a source-detector distance $X = 0.1$ mm, for $\gamma = 0.999$ are shown in Fig. 5(b). The dashed line is the result of wave theory, see closed form expression eq. (4). Also in this case, the agreement between wave theory and the event-by-event simulation is extremely good.

5.3 Double-slit experiment with circular sources

As a third example, we consider the double-slit experiment with circular sources, a straightforward extension of the two-dimensional double-slit system to three dimensions. As shown in Fig. 5(c), there is excellent agreement between the event-by-event simulation and the analytical expression eq. (6).

5.4 Experiment with a Fresnel biprism

Finally, we consider the single-photon experiment with a Fresnel biprism.¹⁵⁾ Figure 6 shows the schematic representation of the single-photon interference experiment that we simulate. For simplicity, we assume that the source S is located in the Fresnel biprism. Then, the results do not depend on the dimensions of the Fresnel biprism. Simulations with a Fresnel biprism of finite size yield results that differ quantitatively only (results not shown).

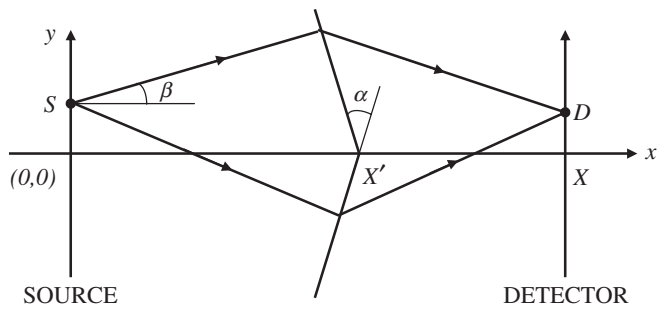


Fig. 6. Schematic diagram of the simulation setup of a single-photon experiment with a Fresnel biprism. The apex of the Fresnel biprism with summit angle α is positioned at $(X', 0)$. In the simulation, a line source emits particles from positions drawn from the current distribution eq. (13) with random angles β chosen uniformly from the interval $[-\alpha/2, \alpha/2]$. The detectors D positioned at (X, y) count the photons.

Messengers are created at positions drawn randomly from the distribution

$$J(x, y) = \delta(x)e^{-y^2/2\sigma^2}, \quad (13)$$

As in all other cases, the time-of-flight of the messenger is calculated according to the rules of geometric optics.³⁰⁾ A messenger starting at $(0, y)$ with angle β (see Fig. 6) leaves the Fresnel biprism at

$$\begin{aligned} x_{\pm} &= \frac{X' \mp y \tan \alpha/2}{1 \pm \tan \beta \tan \alpha/2}, \\ y_{\pm} &= \frac{y' + X' \tan \beta}{1 \pm \tan \beta \tan \alpha/2}, \end{aligned} \quad (14)$$

where the sign has to be chosen such that $x_{\pm} \leq X'$ and $\pm y_{\pm} \geq 0$, that is such that the path of the messenger crosses the Fresnel biprism boundary. Using the fact that the tangential component of the velocity is continuous across the Fresnel biprism boundary,³⁰⁾ we have

$$\beta'_{\pm} = \frac{\pm \alpha}{2} + \arcsin \left[n \sin \left(\beta \mp \frac{\alpha}{2} \right) \right], \quad (15)$$

and we find that the messenger hits the screen at $D = [X, (X - x_{\pm}) \tan \beta'_{\pm} + y_{\pm}]$ and that the total time traveled is given by

$$t = n \frac{x_{\pm}}{c} \sec \beta + \frac{X - x_{\pm}}{c} \sec \beta'_{\pm}. \quad (16)$$

In the simulation, the angle of incidence β of the photons is selected randomly from the interval $[-\alpha/2, \alpha/2]$, where α denotes the summit angle of the Fresnel biprism. A collection of representative simulation results for $\gamma = 0.999$ is presented in Fig. 7. The dashed lines are the numerical results obtained from wave theory by Monte Carlo sampling. Again, we find that there is excellent quantitative agreement between the event-by-event simulation data and wave theory. Furthermore, the simulation data presented in Fig. 7 is qualitatively very similar to the results reported in ref. 15 [compare with Fig. 4(d) and Fig. 5(a)(b) of ref. 15]. Figure 4(c) and 4(d) of ref. 15 are made of approximately 20000 photocounts on the CCD camera, while the number of photodetections on the avalanche photodiodes in absence of the CCD camera would be 40×10^6 during the exposure time of 2000 s. Hence the ratio of detected to emitted

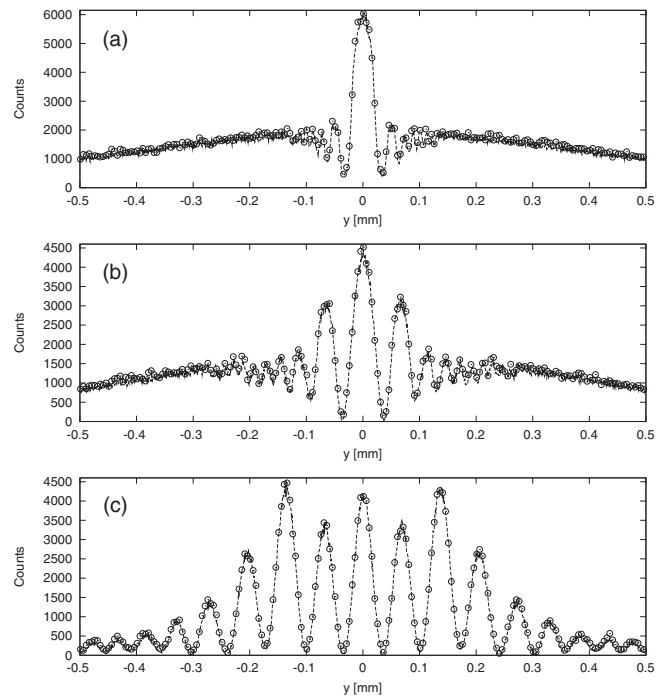


Fig. 7. Detector counts as a function of the detector position y of the detector array positioned at X for a single-photon interference experiment with a Fresnel biprism (see Fig. 6). The Fresnel biprism has an index of refraction $n = 1.5631$ and a summit angle $\alpha = 1^\circ$. Its apex is positioned at $(X', 0)$ with $X' = 45$ mm. The source emits particles according to a Gaussian current distribution with variance $\sigma = 0.531$ mm and wavelength $\lambda = 670$ nm.¹⁵⁾ The circles denote the event-based simulation results. The dashed lines denote the numerical results as obtained from wave theory. (a) $X - X' = 7$ mm; (b) $X - X' = 15$ mm; (c) $X - X' = 55$ mm. Thousand detectors were used to record the individual events.

photons is of the order of 0.0005. This ratio is much smaller than what we observe in our idealized simulation experiment. Namely, each of the thousand detectors making up the detection area is hit on average by sixty thousand photons and the number of clicks generated by the detectors is approximately 16×10^5 . Hence, the ratio of detected to emitted photons is of the order of 0.026, much larger than the 0.0005 observed in experiment.¹⁵⁾

6. Experimental Tests: A Proposal

The simulation models that we propose in this paper make specific predictions that may be tested by carefully designed, time-resolved single-photon interference experiments. However, not all experiments one can think off are as easy to realize. One of the simplest proposals to test the simulation models would be to consider a large number (M) of identical and independent two-beam (or double-slit) interference experiments in which only one photon is detected at each of the M detection screens. According to quantum theory, summing up the single spots of the M detection screens gives the same interference pattern as if one would conduct one two-beam interference experiment with M photons being detected on the same detection screen (all under the assumption that every time a photon is emitted and that all emitted photons are detected). For this experiment, the simulation models that we have introduced do not yield an interference pattern, as is clear from their description. Thus, at least in principle, this experiment should be able to refute

the corpuscular model. Note that in the absence of any experimental evidence and bearing in mind that quantum theory has nothing to say about individual events,³³⁾ it is only a hypothesis that the experiment with finite M will yield results that agree with quantum theory. Whether this hypothesis is actually true remains to be demonstrated by an experiment. Unfortunately, in practice, this experiment may be difficult to realize, the central question being how large M should be before one observes a pattern that resembles the one predicted by wave theory. A rough estimate, based on experiments with electrons³⁵⁾ suggests that $M > 50000$, a number which makes this proposal very hard to realize in practice. Therefore, we propose another experiment that may be realizable with present-day technology.

As explained earlier, if our simulation models operate in the stationary-state regime, they reproduce the wave theoretical results. Therefore, to falsify our event-based models the single-photon experiment should be designed such that it is sensitive to the transient behavior of the whole setup. In other words, the experiment should operate on a time scale that is sufficiently short to prevent the DLM in our detector models to reach the stationary state. For a fair comparison between experiment and our simulation models, it is essential that the experimenter does not discard data that is recorded during the “calibration” or “warm-up” stage because this data may contain valuable information about the transient behavior of the experimental setup.

In this section, we use our simulation approach to make predictions of laboratory experiments that may be realizable. Consider again the double-slit experiment depicted in Fig. 2 but instead of having many detectors at different angles θ , we use only one detector placed on a goniometer. The idea is to keep the total exposure time constant while the detector is swept back-and-forth over (part of) the half-circle (see Fig. 2). In our simulation models, the recorded interference pattern will then depend on the angular velocity of the detector. For velocities that are sufficiently small to allow the DLM to reach the stationary state, the interference pattern obtained agrees with the one predicted by wave theory. On the other hand, if the detector position changes rapidly, the DLM may not receive enough events to accurately reproduce the wave mechanical result. Therefore, if we keep the total exposure time constant and perform a set of experiments for several choices of the sweep velocity, our simulation models predict that the interference patterns will change and that these changes reflect the internal dynamics of the detector model used.

The procedure that we propose is the following. First, we fix the angle $\delta\theta$ by which the detector position will be moved. For simplicity, we assume that the aperture of the detector is equal to $\delta\theta$. Then, we fix the total number of events N_{total} which, on average, will arrive within each arc of angle $\delta\theta$. Finally, we select the number of times N_{sweeps} that the detector will be swept back-and-forth over the half circle.

In the simulation, the internal variables of the detector models are initialized once. The simulation results presented in this section have been obtained using $\delta\theta = 1^\circ$, $N_{\text{total}} = 10^6$, $N_{\text{sweeps}} = 1, 25, 50, 100$, $\gamma = 0.999$, and for the modified detector models introduced in Appendix B, $\kappa = 0.9$, $w_0 = 0.9$, and $\nu = 0.99$. In all figures, the theoretical result eq. (2) is rescaled to fit to the maximum of the simulation

data at the smallest sweep velocity and, in the case of IIIa and IIIb, also shifted to account for the non-zero bias.

As explained in Appendix B, the simple detector model introduced in §4 with the DLM defined by eq. (7) may require a significant amount (order of thousands) of input events to reach the stationary state. Hence, if we move the detector before the DLM reaches its stationary state, this detector model may not produce results that agree with wave theory. This expectation is confirmed by the results shown in Figs. 8(Ia) and 8(Ib). If the detector moves slowly ($N_{\text{sweeps}} = 1$), the event-based simulation data are in concert with wave theory, as is clear from the comparison of the stars and the solid lines in Figs. 8(Ia) and 8(Ib). From Figs. 8(Ia) and 8(Ib) it is also clear that increasing the number of sweeps to $N_{\text{sweep}} = 25$ (recall that the total amount of events corresponding to the total exposure time in the experiment is fixed) leads to a reduction of the visibility of the fringes. If we increase the number of sweeps to $N_{\text{sweep}} = 50$, the detector model fails qualitatively.

Thus, an experiment that uses a moving detector might be able to rule out event-based models Ia and Ib as candidate descriptions of the single-photon interferences. However, this does not yet imply that our approach as such should be abandoned: It may be that the detector model is too simple. Therefore, it is of interest to explore to what extent the results depend on the particular algorithms used.

It is not difficult to modify the DLM defined by eq. (7) such that the convergence to the stationary state is much faster or that the response to changes in the input data is faster. In Appendix B, we give the details of two of such variants.

DLM II is constructed such that its stationary state behavior is the same as that of the simple DLM [eq. (7)], hence the detector model using this DLM reproduces the results of wave theory if we employ an array of detectors or move the single detector very slowly. From Figs. 8(IIa) and 8(IIb), we may conclude that this model is an improvement over the simple model in that it still shows interference fringes at a sweeping rate of $N_{\text{sweep}} = 50$. For $N_{\text{sweeps}} = 100$, the detector receives approximately $N_{\text{total}}/(180N_{\text{sweeps}}/\delta\theta) \approx 55$ events before it moves to the next position. With this small amount of input events, DLM II does not reach the stationary state (see also Fig. B-1).

DLM III is a little different from DLM II: It is sensitive to differences between the internal state and the input message. As Figs. 8(IIIa) and 8(IIIb) show, these detector models produce output signals that are insensitive to the speed at which the detector moves but this comes at the price of a nonzero bias which is, within statistical fluctuations, independent of the detector position or velocity. Subtracting this bias, all the data fit the theoretical curve very well.

Summarizing: For experiments that use detectors that have fixed positions, our event-based models for the detector yield results that cannot be distinguished from those of wave theory. However, our simulation models for single-photon two-beam interference show features that may be tested experimentally by measuring the intensity as a function of the speed of a moving detector. We have proposed and analyzed a realizable, time-resolved experiment that directly probes the dynamics of our detector models and predicted the outcome of such future experiments.

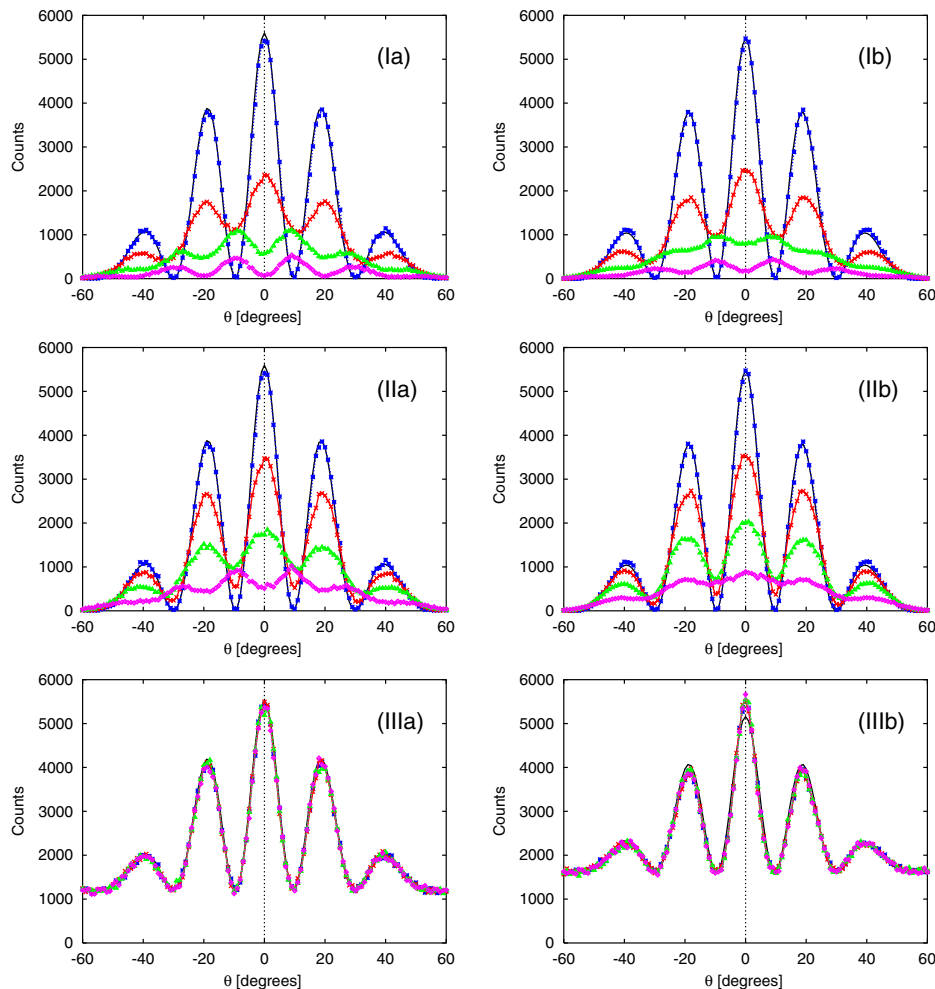


Fig. 8. (Color online) Detector counts as a function of the angular detector position θ for the interference experiment shown in Fig. 2 which employs only one single-photon detector that is swept over the half circle with a fixed angular velocity. The results are obtained from event-by-event simulations with six different detector models. The line sources have a width $a = \lambda$ are separated by a center-to-center distance $d = 3\lambda$, and $X = 0.05$ mm (see Fig. 2). The labels in the figures indicate the detector model (algorithms) used. Roman numbers refer to the DLM update rule. The letters a and b refer to the pseudo-random and deterministic generation of clicks, respectively. Ia: eqs. (7) and (8); Ib: eqs. (7) and (B-3); IIa: eqs. (B-1) and (8); IIb: eqs. (B-1) and (B-3); IIIa: eqs. (B-2) and (8); IIIb: eqs. (B-2) and (B-3). Stars: $N_{\text{sweeps}} = 1$; Crosses: $N_{\text{sweeps}} = 25$; Triangles: $N_{\text{sweeps}} = 50$; Diamonds: $N_{\text{sweeps}} = 100$; Solid lines: Wave theory [see eq. (2)]. Other lines are guide to the eye only.

7. Conclusion

We have demonstrated that it is possible to give a corpuscular description for single-photon interference experiments with a double-slit, two beams, and with a Fresnel biprism. Our event-by-event simulation model

- does not require any knowledge about the solution of a wave equation,
- reproduces the results from wave theory,
- satisfies Einstein's criterion of local causality,
- provides a simple, logically consistent, particle-based description of interference.

We do not exclude that there are other event-by-event algorithms that reproduce the interference patterns of wave theory. For instance, in the case of the single-electron experiment with the biprism,³⁵⁾ it may suffice to have an adaptive machine handle the electron–biprism interaction without having adaptive machines modeling the detectors. We leave this topic for future research.

We hope that our simulation results will stimulate the design of new time-resolved single-photon experiments to

test our corpuscular model for interference. In §6, we proposed such an experiment and also predicted the outcome if our simulation model captures the essence of the event-based processes. Note however that the models we have employed are not unique, as shown explicitly in §4. This leaves some freedom to adapt the simulation models to the actual experiments that will be performed.

Finally, it may be of interest to mention that our approach opens a route for incorporating interference phenomena into ray-tracing software. In our simulation method, each messenger simply follows one of the rays through the medium, updating the message (corresponding to the phase information) as it travels along. Therefore, for applications where the solution of the Maxwell equations is prohibitive, the combination of our technique and ray tracing may be a viable alternative.

Acknowledgments

We would like to thank K. De Raedt, K. Keimpema, S. Zhao, M. Novotny, and B. Baten for many helpful comments. This work is partially supported by NCF, the

Netherlands, by a Grant-in-Aid for Scientific Research on Priority Areas, and the Next Generation Super Computer Project, Nanoscience Program from the Ministry of Education, Culture, Sports, Science and Technology, Japan.

Appendix A

We demonstrate that as $\gamma \rightarrow 1^-$ the internal vector \mathbf{p}_k in eq. (7) converges to the average of the messages $\mathbf{e}_1, \mathbf{e}_2, \dots$.

Let $\|\mathbf{x}\|$ denote the Euclidean norm of the vector \mathbf{x} . Then, as $0 < \gamma < 1$, $\|\mathbf{e}_k\| = 1$ for all $k > 0$, and $\|\mathbf{p}_0\| = 1$ it follows immediately from eq. (C.1) that $\|\mathbf{p}_k\| \leq 1$ for all $k > 0$, hence $\lim_{k \rightarrow \infty} \mathbf{p}_k$ exists. To determine $\mathbf{p} = \lim_{k \rightarrow \infty} \mathbf{p}_k$, we have to make assumptions about the properties of the sequence $\{\mathbf{e}_1, \mathbf{e}_2, \dots\}$. For instance, if the sequence $\{\mathbf{e}_1, \mathbf{e}_2, \dots\}$ is generated by a stochastic process with mean $\langle \mathbf{e}_{j+1} \rangle = \mathbf{e}$ for $j = 0, \dots, k-1$, then it is easy to show that $\mathbf{p} = \mathbf{e}$. Thus, in this case, the machine defined by the rule eq. (7) learns the average \mathbf{e} by updating its internal vector for each message it receives.

In practice, only finite sequences $\{\mathbf{e}_1, \mathbf{e}_2, \dots, \mathbf{e}_K\}$ are available. In this case, we can estimate the limiting value by assuming that the sequence repeats itself, an assumption that is common in Fourier analysis and signal processing in general.³⁶⁾ From eq. (C.1), we have

$$\begin{aligned} \mathbf{p}_{nK} &= \gamma^K \mathbf{p}_{(n-1)K} + (1-\gamma) \sum_{j=(n-1)K}^{nK-1} \gamma^{nK-j-1} \mathbf{e}_{j+1} \\ &= \gamma^K \mathbf{p}_{(n-1)K} + (1-\gamma) \sum_{j=0}^{K-1} \gamma^{K-j-1} \mathbf{e}_{j+1+(n-1)K} \\ &= \gamma^K \mathbf{p}_{(n-1)K} + (1-\gamma) \mathbf{f}_K, \end{aligned} \quad (\text{A.1})$$

where

$$\mathbf{f}_K = \sum_{j=0}^{K-1} \gamma^{K-j-1} \mathbf{e}_{j+1}, \quad (\text{A.2})$$

and $n > 0$. From eq. (A.1) we find

$$\mathbf{p}_{nK} = \gamma^{nK} \mathbf{p}_0 + (1-\gamma) \frac{1-\gamma^{nK}}{1-\gamma^K} \mathbf{f}_K, \quad (\text{A.3})$$

and hence

$$\lim_{n \rightarrow \infty} \mathbf{p}_{nK} = \frac{1-\gamma}{1-\gamma^K} \sum_{j=0}^{K-1} \gamma^{K-j-1} \mathbf{e}_{j+1}, \quad (\text{A.4})$$

such that

$$\lim_{\gamma \rightarrow 1^-} \lim_{n \rightarrow \infty} \mathbf{p}_{nK} = \frac{1}{K} \sum_{j=0}^{K-1} \mathbf{e}_{j+1}. \quad (\text{A.5})$$

From eq. (A.5), we conclude that as $\gamma \rightarrow 1^-$ the internal vector \mathbf{p}_k converges to the average of the messages $\mathbf{e}_1, \dots, \mathbf{e}_K$. In general, the parameter γ controls the precision with which the machine defined by eq. (7) learns the average of a sequence of messages and also controls the pace at which new messages affect the internal state of the learning machine.¹⁷⁾

Appendix B

Without performing any simulation, we can already see from eq. (7) that the simple machine may not perform very well in some cases. Suppose that $\mathbf{p}_0 = \mathbf{0}$ and that $\mathbf{e}_k = \mathbf{e}$ for all k . Then, from eq. (7) it follows that $\mathbf{p}_k = (1-\gamma^k)\mathbf{e}$ such that $\|\mathbf{p}_k - \mathbf{e}\| = \gamma^k$. Although the latter equation shows that

the convergence of \mathbf{p}_k to the input vector \mathbf{e} is exponentially fast, for γ very close to one, in practice, it may take quite a number of events to reach the stationary state.

In this Appendix, we describe two modifications of the algorithm eq. (7) of the first stage (DLM) and one alternative for the algorithm eq. (8) of the second stage. The modifications of the first stage reduce the amount of events required for the detector model to reach the stationary regime. The alternative for the second stage eliminates the need for a pseudo-random number generator.

It is not difficult to modify the machine such that its asymptotic behavior remains the same while improving, significantly, the speed with which it learns from the input \mathbf{e}_k . A simple, but by no means unique, modification is to add one memory element to store one variable, denoted by w_k , which keeps track of the differences between \mathbf{p}_k and \mathbf{p}_{k-1} . For $k > 0$, these variables are updated according to the rule

$$\begin{aligned} \mu_{k-1} &= \gamma(1-w_{k-1}), \\ \mathbf{p}_k &= \mu_{k-1}\mathbf{p}_{k-1} + (1-\mu_{k-1})\mathbf{e}_k, \\ w_k &= \kappa w_{k-1} + (1-\kappa) \frac{\|\mathbf{p}_k - \mathbf{p}_{k-1}\|}{2}, \end{aligned} \quad (\text{B.1})$$

where $0 < \kappa < 1$ is another control parameter and $0 \leq w_0 \leq 1$. Although the variable μ_k is redundant, we wrote eq. (B.1) such that it is obvious that it is an extension of eq. (7). In essence, instead of keeping γ fixed in the rule to update \mathbf{p}_k [see eq. (7)], in eq. (B.1), the value of μ_k in the rule to update \mathbf{p}_k is made variable. This flexibility is then exploited through the first and last rule in eq. (B.1). The last rule defines a machine that learns the distance between \mathbf{p}_k and \mathbf{p}_{k-1} , the learning speed being controlled by κ . The basic idea is that if this distance is large (say close to but less than 2), the last rule will drive w_k to one such that μ_k is small and the change of \mathbf{p}_k may be large. In the opposite situation, the last rule will force w_k to zero and \mathbf{p}_k will change by small amounts (assuming γ is close to but less than one). As $\mu_k \leq \gamma$, the asymptotic behavior of the machine defined by the rule eq. (B.1) is easily shown to be the same as that of the simple version in which we keep $\mu_k = \gamma$. Thus, although equations that govern the dynamics of the machine eq. (B.1) are nonlinear (in the \mathbf{p} 's), asymptotically the dynamics is governed by the linear equation eq. (7).

It is not easy to study the transient behavior of the classical, dynamical systems defined by eqs. (7) and (B.1) by analytical methods but it is almost trivial to simulate these models on a computer. In Fig. B-1, we show some representative simulation results to illustrate that the slightly more complicated machine eq. (B.1) performs significantly better than the simple machine eq. (7) with respect to the number of events it takes for the machine to reach the stationary state. Roughly speaking, after about 60 events, machine eq. (B.1) has learned enough to reproduce the correct averages. As expected on theoretical grounds, both machines converge to the same stationary state.

A minor modification of algorithm eq. (B.1) yields the DLM defined by

$$\begin{aligned} \mu_{k-1} &= \gamma(1-w_{k-1}), \\ \mathbf{p}_k &= \mu_{k-1}\mathbf{p}_{k-1} + (1-\mu_{k-1})\mathbf{e}_k, \\ w_k &= \kappa w_{k-1} + (1-\kappa) \frac{\|\mathbf{p}_k - \mathbf{e}_k\|}{2}. \end{aligned} \quad (\text{B.2})$$

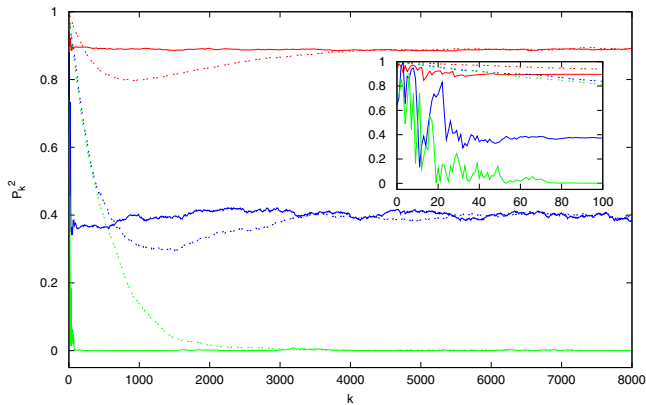


Fig. B-1. (Color online) The square of the length of the internal vector \mathbf{p}_k^2 as a function of the number of received events k for three different input messages $\mathbf{e}_k = (r_k^{1/2}, (1-r_k)^{1/2})$ (top lines), $\mathbf{e}_k = (\cos \pi r_k, \sin \pi r_k)$ (middle lines), and $\mathbf{e}_k = (\cos 2\pi r_k, \sin 2\pi r_k)$ (bottom lines) where the $0 \leq r_k < 1$ are uniform pseudo-random numbers. Dashed lines: Model eq. (7). Solid lines: Model eq. (B-1) with $\kappa = 0.9$. The inset shows the short-time response of models eq. (7) and eq. (B-1) in more detail. In all cases $\mathbf{p}_0 = (1, 0)$, $w_0 = 0.9$, and $\gamma = 0.999$.

Note that the only change is in the third rule where we replaced \mathbf{p}_{k-1} by \mathbf{e}_k . This replacement causes the machine to respond very fast to changes in the sequence of input messages $\{\mathbf{e}_k\}$ but, at the same time, also leads to a reduction of the average value of μ_{k-1} which in turn, will cause the detector model to produce a nonzero signal, independent of the input messages [see Figs. 8(IIIa) and 8(IIIb)].

As an alternative to the pseudo-random “click generator” eq. (8), we may generate the clicks by means of a very simple DLM¹⁸⁾ containing a single internal variable $0 \leq z_k \leq 1$ that is updated according to

$$S_k = \begin{cases} 0 & \text{if } |\mathbf{p}_k^2 - \nu z_{k-1}| < |\mathbf{p}_k^2 - \nu z_{k-1} - 1 + \nu|, \\ 1 & \text{otherwise} \end{cases},$$

$$z_k = \nu z_{k-1} + (1 - \nu)S_k. \quad (\text{B-3})$$

Here, the parameter $0 < \nu < 1$ plays the same role as γ in eq. (7). The non negative number \mathbf{p}_k^2 is the input message for the DLM. The dynamics of the system defined by eq. (B-3) is very different from that of eq. (7).¹⁸⁾ Elsewhere, we have shown that for a fixed input message \mathbf{p}^2 , the machine defined by eq. (B-3) generates a binary sequence (the S_k 's) such that in the long run the ratio of the number of ones relative to the total number of events is equal to the time average of \mathbf{p}_k^2 .¹⁸⁾ Thus, the machine defined by eq. (B-3) produces clicks with a rate that is determined by \mathbf{p}_k^2 .

Appendix C: Relation between Simulation Model and Wave Mechanics

The simulation results presented in §5 demonstrate that the event-based model is capable of reproducing the results of wave theory without making recourse to the solution of the wave equation or even a single concept of wave theory. As there seems to be a general consensus that such models are not supposed to exist, it is of interest to show that for the problems that we deal with in this paper, the event-based model contains the description that derives from Maxwell's equations.

Our demonstration consists of two steps. First we relate the variables of the event-based model to those of classical electrodynamics. Second, in analogy with the derivation of

Table C-I. Correspondence between Maxwell's theory and the particle-based, event-by-event simulation model. For simplicity of presentation, we consider the case of a linearly polarized wave only.

	Classical electrodynamics	Event-based simulation model
Description	Wave	Particle
Properties	Oscillator frequency f	Oscillator frequency f
	Direction \mathbf{q}	Direction \mathbf{q}
	Propagation time t	Time-of-flight t_k
	Phase velocity c	Velocity c
Message	$\mathbf{E} = \mathbf{E}_0 \cos(\omega t - \mathbf{q} \cdot \mathbf{r} + \varphi)$	$\mathbf{e}_k = (\cos 2\pi f t_k, \sin 2\pi f t_k)$
Material	Polarization $\mathbf{P}(t)$	Internal vector \mathbf{p}_k
Interaction with material	$\mathbf{P}(t) = \int_0^t \chi(u) \mathbf{E}(t-u) du$	$\mathbf{p}_k = \gamma \mathbf{p}_{k-1} + (1 - \gamma) \mathbf{e}_k$

the diffusion equation from the discrete random walk model, we show how our event-based model leads to the Debye model for the interaction between material and electric field. Other models such as the Drude or Lorentz model can be derived in a similar manner but to keep the presentation concise, these derivations are relegated to a future paper.

As is evident from Table C-I, the messenger can be viewed as the event-based equivalent of a classical, linearly polarized electromagnetic wave with frequency f : The message \mathbf{e}_k corresponds to a plane wave with wave vector \mathbf{q} ($q = 2\pi f/c$). The time-of-flight t_k corresponds to the phase of the electric field. Adding another clock to the messenger suffices to model the second electric field component orthogonal to the first one, and hence the fully polarized plane wave.²⁷⁾ For the systems studied in the present paper including this extra feature, namely the equivalent of the polarization of the wave, is not necessary and therefore we confine the discussion to messages that are represented by two-dimensional unit vectors.

The internal vector \mathbf{p}_k plays the role of the polarization vector $\mathbf{P}(t)$ of the detector material. Indeed, comparing the formal solution of eq. (7)

$$\mathbf{p}_k = \gamma^k \mathbf{p}_0 + (1 - \gamma) \sum_{j=0}^{k-1} \gamma^j \mathbf{e}_{k-j}, \quad (\text{C-1})$$

with the constitutive equation

$$\mathbf{P}(t) = \int_0^t \chi(u) \mathbf{E}(t-u) du, \quad (\text{C-2})$$

in Maxwell's theory,³⁰⁾ it is clear that both equations have the same mathematical structure: The left hand sides are convolutions of the incoming (applied) message (field) with memory kernel $\gamma^j [\chi(u)]$ (in applications, we may assume that the initial value $\mathbf{p}_0 = 0$). Thus, the DLM is a simple model for the interaction of the individual photons with the material of the detector. The time-of-flight, corresponding to the phase of the electric field, is used to update the internal vector which corresponds to the polarization vector of the material.

Next, we show that this analogy can be carried much further by mimicking the derivation that relates the discrete random walk on a line to the one-dimensional diffusion equation.³⁷⁾ The essential steps for both the random walk and our event-based detector model are summarized in Table C-II. Both models describe a process that proceeds in discrete time steps τ . The random walk model is formulated on a lattice with mesh size δ . In the case of the random walk,

Table C-II. Analogy between the derivation of the diffusion equation from the random walk model and the derivation of one of the constitutive equations in Maxwell's theory from the discrete model eq. (7) proposed in this paper. The assumptions that the limiting values $D = \lim_{\delta \rightarrow 0} \lim_{\tau \rightarrow 0} \delta^2/2\tau$ and $\Gamma = \lim_{\gamma \rightarrow 1} \lim_{\tau \rightarrow 0} (1 - \gamma)/\tau\gamma$ are nonzero and finite are essential to obtain a well-defined continuum approximation of the discrete update rules.

	Random walk	Detector model
Update rule	$p_{l,k+1} = \frac{1}{2}(p_{l+1,k} + p_{l-1,k})$	$\mathbf{p}_k = \gamma \mathbf{p}_{k-1} + (1 - \gamma)\mathbf{e}_k$
Length scale: δ	$p_{l,k} = p(l\delta, k\tau) = p(x, t)$	$\mathbf{p}_k = \mathbf{p}(k\tau) = \mathbf{p}(t)$
Time scale: τ		$\mathbf{e}_k = \mathbf{e}(k\tau) = \mathbf{e}(t)$
Small τ	$p_{l,k+1} = p(x, t) + \tau \frac{\partial p(x, t)}{\partial t} + \mathcal{O}(\tau^2)$	$\mathbf{p}_{k-1} = \mathbf{p}(t) - \tau \frac{\partial \mathbf{p}(t)}{\partial t} + \mathcal{O}(\tau^2)$
Small δ	$p_{l\pm 1,k} = p(x, t) \pm \delta \frac{\partial p(x, t)}{\partial x} + \frac{\delta^2}{2} \frac{\partial^2 p(x, t)}{\partial x^2} + \mathcal{O}(\delta^3)$	
Small δ and τ	$\frac{\partial p(x, t)}{\partial t} \approx \frac{\delta^2}{2\tau} \frac{\partial^2 p(x, t)}{\partial x^2}$	$\frac{\partial \mathbf{p}(t)}{\partial t} \approx -\frac{1 - \gamma}{\tau\gamma} \mathbf{p}(t) + \frac{1 - \gamma}{\tau\gamma} \mathbf{e}(t)$
$\lim_{\delta \rightarrow 0} \lim_{\tau \rightarrow 0}$	$\frac{\delta^2}{2\tau} \rightarrow D, 0 < D < \infty$	
$\lim_{\gamma \rightarrow 1} \lim_{\tau \rightarrow 0}$		$\frac{1 - \gamma}{\tau\gamma} \rightarrow \Gamma, 0 < \Gamma < \infty$
Equation	$\frac{\partial p(x, t)}{\partial t} = D \frac{\partial^2 p(x, t)}{\partial x^2}$	$\frac{\partial \mathbf{p}(t)}{\partial t} = -\Gamma \mathbf{p}(t) + \Gamma \mathbf{e}(t)$
Fourier space	$\mathbf{p}(\omega) = \Gamma(i\omega + \Gamma)^{-1} \mathbf{e}(\omega)$	$\mathbf{P}(\omega) = \chi(\omega) \mathbf{E}(\omega)$
	\Downarrow	\Downarrow
	Diffusion equation	Constitutive equation

we let the time step τ and mesh size δ go to zero. In the event-based model we let the time step τ , that is the time between the arrival of successive messages, approach zero and let γ approach one. For both models, we demand that the resulting continuum equations make sense. This enforces relations between τ and δ^2 and between τ and γ , as shown in Table C-II. Then, the former relation yields an explicit expression of the diffusion coefficient $D = \delta^2/2\tau$ in terms of the length and time scale of the discrete random walk model. Likewise, the latter leads to the Debye model for a dispersive medium³⁸ and gives an explicit expression for the relaxation time $1/\Gamma = \tau\gamma/(1 - \gamma)$ in terms of the parameters of the event-based model.

As Table C-II shows, under certain conditions, the discrete models can be approximated by continuum equations that describe the coarse-grained (in space-time for the random walkers and in time for the event-based model) behavior but the discrete models provide a description with details that can never be extracted from the corresponding continuum equations. Of course, the ultimate justification of the event-based model is that, as shown in §5, it can reproduce the results of wave theory. Appendix D gives a further justification of our approach from a computational point of view.

Appendix D: Computational Point of View

There is a general consensus that unless we first solve the wave equation and use this solution as the probability distribution for generating events, there are very fundamental, apparently unsurmountable, problems to derive from a wave mechanical description a process that produces the events that are observed in experiment.³³ The arguments used are rather abstract and general³³ and to understand the subtleties that are involved it may help to address this issue from a computational point of view.

For phenomena that cannot (yet) be described by a deductive theory, it is common practice to use probabilistic models. Although Kolmogorov's probability theory provides a rigorous framework to formulate such models, there are

ample examples that illustrate how easy it is to make plausible assumptions that create all kinds of paradoxes, also for every-day problems.^{32,37,39,40} Subtle mistakes such as dropping (some of the essential) conditions, like in the discussion of the double-slit experiment,^{41,42} mixing up the meaning of physical and statistical independence or changing one probability space for another during the course of an argument, can give rise to all kinds of paradoxes.^{32,41,43-46} For instance, Feynman used the double-slit experiment as an example to argue that "far more fundamental was the discovery that in nature the laws of combining probabilities were not those of the classical probability theory of Laplace",⁴⁷ but this statement has been shown to result from an erroneous application of probability theory.^{32,41,42}

By construction, if we use a digital computer to produce numbers as we do in this paper, we stay in the domain of elementary arithmetic and we do not have to worry about the subtleties of Kolmogorov's probability theory.

Instead of discussing the apparently unsurmountable problem in its full generality, which we could, it is more instructive to examine in detail the simple, concrete example of the double-slit model depicted in Fig. 2. According to Maxwell's theory, in the Fraunhofer regime the light intensity at the detector on a circular screen is given by³⁰

$$\frac{I(\theta)}{I(0)} = \left| \int_{-\infty}^{+\infty} e^{iqy' \sin \theta} \rho(y') dy' \right|^2, \quad (\text{D-1})$$

$$= \left(\frac{\sin \frac{qa \sin \theta}{2}}{\frac{qa \sin \theta}{2}} \right)^2 \cos^2 \frac{qd \sin \theta}{2}, \quad (\text{D-2})$$

where $\rho(y') = [\Theta(a - |y' - d/2|) + \Theta(a - |y' + d/2|)]/2a$ is the normalized density distribution for the coordinate y' .

First, starting from the explicit expression eq. (D-2) for the density $I(\theta)/I(0)$, it is trivial to construct an algorithm that generates events according to this density. Indeed, let us define

$$S_j(\theta) = \Theta[I(\theta) - r_j I(0)], \quad (\text{D}\cdot 3)$$

where $0 \leq r_j < 1$ denotes a uniform pseudo-random number. Then, the number of clicks of the detector at angular position θ is given by

$$N_k(\theta) = \frac{1}{k} \sum_{j=1}^k S_j(\theta), \quad (\text{D}\cdot 4)$$

and for sufficiently large k , we have $N_k(\theta) \rightarrow I(\theta)/I(0)$ with probability one. This completes the construction of the event-based algorithm based on the knowledge of $I(\theta)/I(0)$. Obviously, this algorithm is built on the knowledge of the explicit solution $I(\theta)$ of the wave problem. The events generated by this algorithm build up the interference pattern one-by-one and can be identified with the clicks of the detectors. This is as far as the quantum theoretical description goes in making contact to the experimental observations: It provides a prescription to calculate the probability density to observe a click on a detector. It is quite common to postulate that there does not exist a description that goes beyond the specification of the probability, excluding that no further advance in a deeper understanding of the process that produces the events can be made.

Disregarding this postulate, we may wonder what happens if we take one step back and assume that we only know about expression eq. (D·1) in terms of the wave amplitudes $\exp(iqy' \sin \theta)$ and density $\rho(y')$. Then, the obvious thing to do is to compute the integral in eq. (D·1) numerically. Without loss of generality, we may write

$$A(\theta) = \frac{1}{N(S)} \sum_{y' \in S} e^{iqy' \sin \theta}, \quad (\text{D}\cdot 5)$$

where the summation is over all y' of the set S accounting for the density $\rho(y')$ and $N(S)$ is the normalization factor. By definition of the integral, if the number of elements of the set S goes to infinity, we have $|A(\theta)|^2 \rightarrow I(\theta)/I(0)$.

Although the numerical calculation of the amplitude $A(\theta)$ is straightforward, there obviously is no relation between the points y' of the set S and the number of clicks of the detector at θ . In fact, the essence of quantum theory is that there is only a relation between $|A(\theta)|^2$ and the number of clicks but to know $A(\theta)$ requires that we first generate (a lot of) pseudo-events y' . Obviously, these pseudo-events y' cannot have an interpretation in terms of observed clicks.

The conclusion therefore is that the description in terms of individual waves [eq. (D·1)] does not contain the ingredients, not even conceptual, to define a process that generates the clicks of the detectors that we observe. Therefore, from a computational perspective, it is futile to try inventing an event-based, particle-like process based on the wave mechanical expression for the intensity in terms of sums over amplitudes.

One may take the position that it is fundamentally impossible to go beyond an event-level description based on the knowledge of $I(\theta)/I(0)$ but by postulating this to be true, one simply postulates that it is impossible to make any advance in a deeper understanding of event-based phenomena. As we have shown by this and many earlier papers, there is no rational argument that supports this postulate other than that it is what we have been taught in physics courses.

Having shown that our event-by-event simulation model reproduces the results of wave theory without resorting to a description in terms of waves, we now explain why, from a computational point of view, we consider this to be an accomplishment and why our approach works.

The crux of our approach is that we do not start from expression eq. (D·1) but construct a discrete event process that converges to eq. (D·1) while generating events that directly correspond to the observed events. During the initial phase, this process may generate events that are accidental but once the process has reached its stationary state, the events appear with frequencies that corresponds to those predicted by wave theory.

To understand the idea behind our approach, it may be helpful to draw an analogy with the well-known Metropolis Monte Carlo (MMC) method for solving statistical mechanical problems.^{48,49} The MMC method generates states S , events in our terminology, with a probability density^{48,49}

$$p(S) = \frac{e^{-E(S)/k_B T}}{\sum_S e^{-E(S)/k_B T}}, \quad (\text{D}\cdot 6)$$

where $E(S)$ denotes the energy of the state S , k_B is Boltzmann's constant and T is the temperature. At first sight, sampling from eq. (D·6) is impossible because in all but a few nontrivial cases for which the partition function $\sum_S e^{-E(S)/k_B T}$ is known, we do not know the denominator. The MMC method solves this problem by constructing a Markov chain that generates a sequence of events S such that asymptotically these events are distributed according to the (unknown) probability density eq. (D·6).^{48,49}

The analogy with our approach is the following. Although very different in all details, our event-based method uses a deterministic process [implemented as a DLM, see eq. (7)] of which the sampling distribution converges to the unknown probability distribution $I(\theta)/I(0)$. The one-to-one correspondence between the objects in the corpuscular, event-based description and those in Maxwell's theory (see §C) ensures that in the long run, the event-based detector model generates clicks with frequencies that correspond to those of the unknown probability distribution $I(\theta)/I(0)$.

- 1) T. Young: *Philos. Trans. R. Soc. London* **92** (1802) 12.
- 2) A. Michelson and E. Morley: *Am. J. Sci.* **34** (1887) 333.
- 3) A. Einstein: *Ann. Phys. (Leipzig)* **17** (1905) 132.
- 4) L. de Broglie: *Ann. Phys. (Paris)* **3** (1925) 22.
- 5) C. Jönsson: *Z. Phys.* **161** (1961) 454.
- 6) P. G. Merli, G. F. Missiroli, and G. Pozzi: *Am. J. Phys.* **44** (1976) 306.
- 7) A. Tonomura, J. Endo, T. Matsuda, T. Kawasaki, and H. Ezawa: *Am. J. Phys.* **57** (1989) 117.
- 8) M. W. Noel and C. R. Stroud, Jr.: *Phys. Rev. Lett.* **75** (1995) 1252.
- 9) A. Zeilinger, R. Gähler, C. G. Shull, W. Treimer, and W. Mamppe: *Rev. Mod. Phys.* **60** (1988) 1067.
- 10) H. Rauch and S. A. Werner: *Neutron Interferometry: Lessons in Experimental Quantum Mechanics* (Oxford University Press, Oxford, U.K., 2000).
- 11) O. Carnal and J. Mlynek: *Phys. Rev. Lett.* **66** (1991) 2689.
- 12) D. W. Keith, C. R. Ekstrom, Q. A. Turchette, and D. E. Pritchard: *Phys. Rev. Lett.* **66** (1991) 2693.
- 13) M. Arndt, O. Nairz, J. Vos-Andreae, C. Keller, G. van der Zouw, and A. Zeilinger: *Nature* **401** (1999) 680.
- 14) B. Brezger, L. Hackermüller, S. Uttenthaler, J. Petschinka, M. Arndt, and A. Zeilinger: *Phys. Rev. Lett.* **88** (2002) 100404.

- 15) V. Jacques, E. Wu, T. Toury, F. Treussart, A. Aspect, P. Grangier, and J.-F. Roch: *Eur. Phys. J. D* **35** (2005) 561.
- 16) R. P. Feynman, R. B. Leighton, and M. Sands: *The Feynman Lectures on Physics* (Addison-Wesley, Reading, MA, 1965) Vol. 3.
- 17) H. De Raedt, K. De Raedt, and K. Michielsen: *Europhys. Lett.* **69** (2005) 861.
- 18) K. De Raedt, H. De Raedt, and K. Michielsen: *Comput. Phys. Commun.* **171** (2005) 19.
- 19) H. De Raedt, K. De Raedt, and K. Michielsen: *Statistical Physics of Quantum Systems: novel orders and dynamics*, J. Phys. Soc. Jpn. **74** (2005) Suppl., p. 16.
- 20) K. Michielsen, K. De Raedt, and H. De Raedt: *J. Comput. Theor. Nanosci.* **2** (2005) 227.
- 21) K. De Raedt, K. Keimpema, H. De Raedt, K. Michielsen, and S. Miyashita: *Eur. Phys. J. B* **53** (2006) 139.
- 22) H. De Raedt, K. De Raedt, K. Michielsen, K. Keimpema, and S. Miyashita: *J. Phys. Soc. Jpn.* **76** (2007) 104005.
- 23) K. De Raedt, H. De Raedt, and K. Michielsen: *Comput. Phys. Commun.* **176** (2007) 642.
- 24) H. De Raedt, K. De Raedt, K. Michielsen, K. Keimpema, and S. Miyashita: *J. Comput. Theor. Nanosci.* **4** (2007) 957.
- 25) S. Zhao and H. De Raedt: *J. Comput. Theor. Nanosci.* **5** (2008) 490.
- 26) S. Zhao, H. De Raedt, and K. Michielsen: *Found. Phys.* **38** (2008) 322.
- 27) S. Zhao, S. Yuan, H. De Raedt, and K. Michielsen: *Europhys. Lett.* **82** (2008) 40004.
- 28) F. Jin, S. Zhao, S. Yuan, H. De Raedt, and K. Michielsen: to be published in *J. Comput. Theor. Nanosci.* (2010): arXiv:0908.1036.
- 29) <http://demonstrations.wolfram.com/EventByEventSimulationOfDoubleSlitExperimentsWithSinglePhoto/>
- 30) M. Born and E. Wolf: *Principles of Optics* (Pergamon, Oxford, U.K., 1964).
- 31) I. G. Saveliev, M. Sanz, and N. Garcia: *J. Opt. B* **4** (2002) S477.
- 32) L. E. Ballentine: *Quantum Mechanics: A Modern Development* (World Scientific, Singapore, 2003).
- 33) D. Home: *Conceptual Foundations of Quantum Physics* (Plenum Press, New York, 1997).
- 34) R. H. Hadfield: *Nat. Photonics* **3** (2009) 696.
- 35) A. Tonomura: *The Quantum World Unveiled by Electron Waves* (World Scientific, Singapore, 1998).
- 36) D. G. Manolakis, V. K. Ingle, and S. M. Kogon: *Statistical and Adaptive Signal Processing* (Artech House, Boston, MA, 2005).
- 37) G. R. Grimmet and D. R. Stirzaker: *Probability and Random Processes* (Clarendon Press, Oxford, U.K., 1995).
- 38) A. Taflove and S. Hagness: *Computational Electrodynamics: The Finite-Difference Time-Domain Method* (Artech House, Boston, MA, 2005).
- 39) M. Tribus: *Rational Descriptions, Decisions and Designs* (Expir Press, Stockholm, 1999).
- 40) E. T. Jaynes: *Probability Theory: The Logic of Science* (Cambridge University Press, Cambridge, U.K., 2003).
- 41) L. E. Ballentine: *Am. J. Phys.* **54** (1986) 883.
- 42) L. Ballentine: in *Foundations of Probability and Physics*, ed. A. Khrennikov (World Scientific, Singapore, 2001) p. 71.
- 43) E. T. Jaynes: in *Maximum Entropy and Bayesian Methods*, ed. J. Skilling (Kluwer Academic, Dordrecht, 1989) Vol. 36, p. 1.
- 44) K. Hess and W. Philipp: *Proc. Natl. Acad. Sci. U.S.A.* **98** (2001) 14228.
- 45) A. Khrennikov: in *Foundations of Probability and Physics*, ed. A. Khrennikov (World Scientific, Singapore, 2001) p. 180.
- 46) K. Hess, W. Philipp, and M. Aschwanden: *Int. J. Quantum Inf.* **4** (2006) 585.
- 47) R. P. Feynman and A. R. Hibbs: *Quantum Mechanics and Path Integrals* (McGraw-Hill, New York, 1965).
- 48) J. H.ammersley and D. C. Handscomb: *Monte Carlo Methods* (Wiley, New York, 1964).
- 49) D. P. Landau and K. Binder: *A Guide to Monte Carlo Simulation in Statistical Physics* (Cambridge University Press, Cambridge, U.K., 2000).